



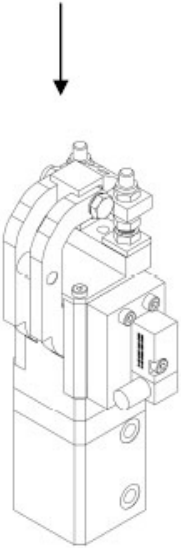
TÜNKERS Pneumatic grippers

GN 40 and GN 40 AS



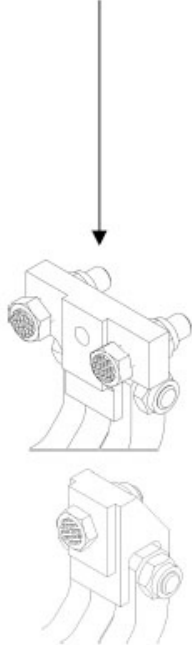
Order key for pneumatic gripper GN 40

GN 40



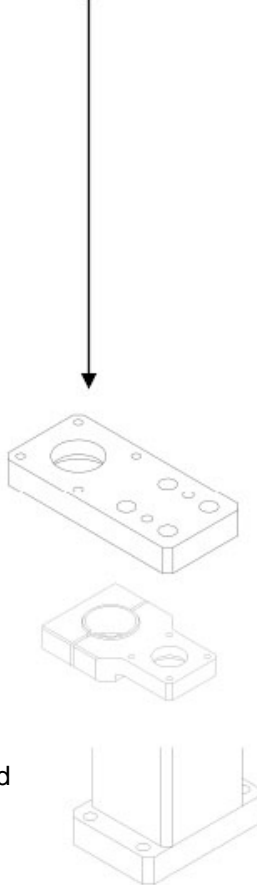
GN 40
Gripper
Cylinder Ø 40 mm

A..



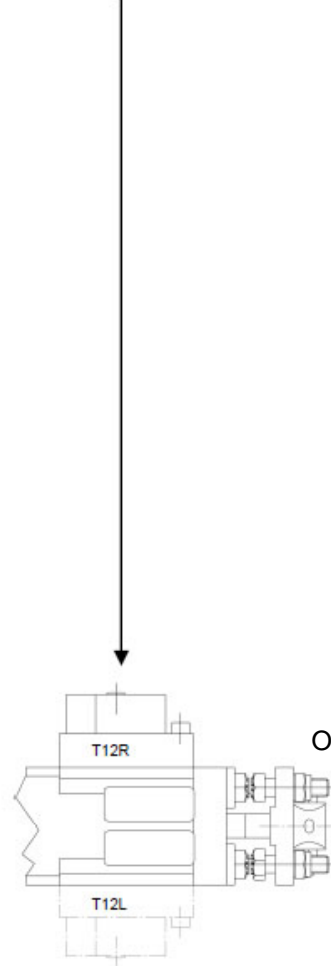
- A21** Clamp arm type: double pressure piece incl. clamping bolts and shims
- A20** Clamp arm type: with pressure piece, without clamping bolts
- A00** Clamp arm type: without pressure piece and clamping bolts
- A11** Clamp arm type: single pressure piece incl. clamping bolts and shims
- A10** Clamp arm type: single pressure piece without clamping bolts
- A00** Clamp arm type: without pressure piece and clamping bolts

K.



- K1** Connection Screw flange
- K2** Connection Shaft-clamping bush
- K3** Connection Bottom flange

T12R



- T12R** Sensing system LEDs mounted on the right

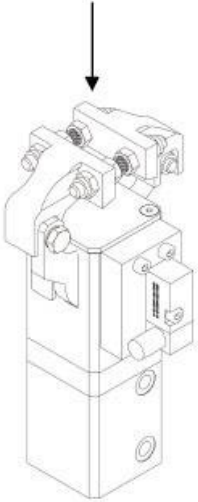
50°

Opening angle



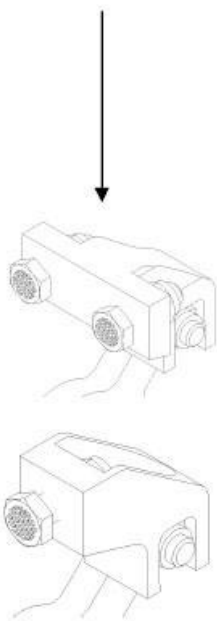
Order key for pneumatic gripper GN 40 AS

GN 40 AS



GN 40 AS
Gripper
Cylinder Ø 40 mm

A21



A21
Clamp arm type:
double pressure piece
incl. clamping bolts and
shims

A20
Clamp arm type:
with pressure piece,
without clamping bolts

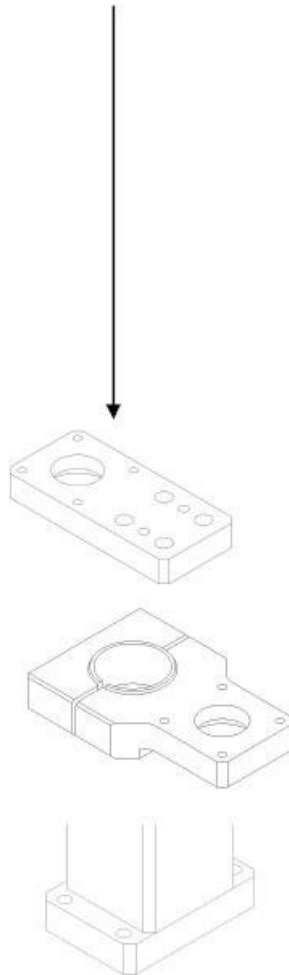
A00
Clamp arm type:
without pressure piece
and clamping bolts

A11
Clamp arm type:
single pressure piece
incl. clamping bolts and
shims

A10
Clamp arm type:
single pressure piece
without clamping bolts

A00
Clamp arm type:
without pressure piece
and clamping bolts

K1

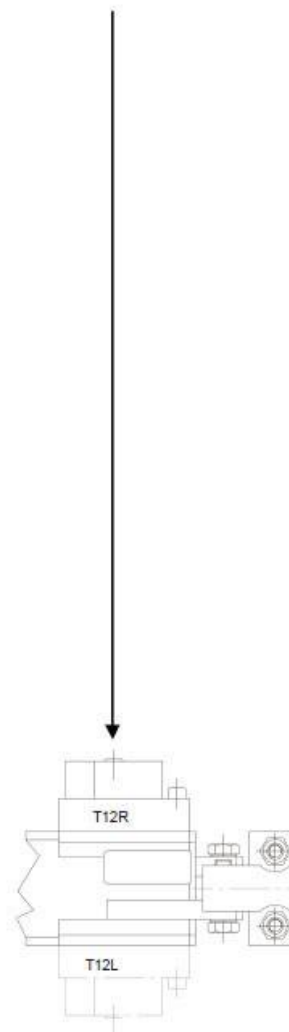


K1
Connection
Screw flange

K2
Connection
Shaft-clamping bush

K3
Connection
Bottom flange

T12R



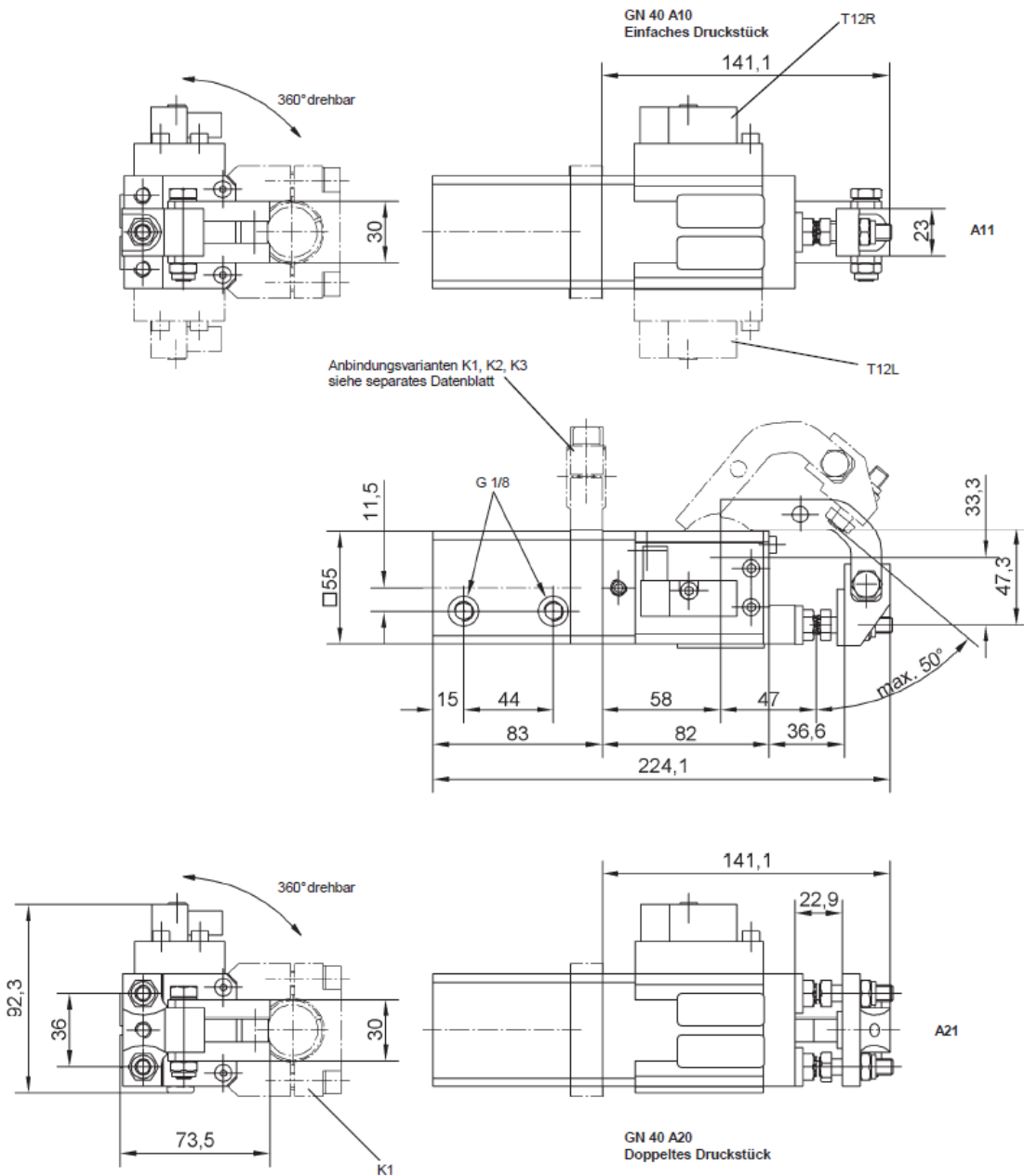
T12R
Sensing system LEDs
mounted on the right

2x80°

Opening angle



Technical data Pneumatic gripper GN 40



Bestellbeispiel:
GN 40 A21 K1 T12R 50°

GN 40:
A21: Typ
Doppeltes Druckstück
inkl. Spannschrauben mit
Hartmetallriffelspitze
Anbindung
K1 Abfrage rechts (Optional: links)
mit LED's
T12R Abfrage links (Optional: rechts)
mit LED's
50° Öffnungswinkel

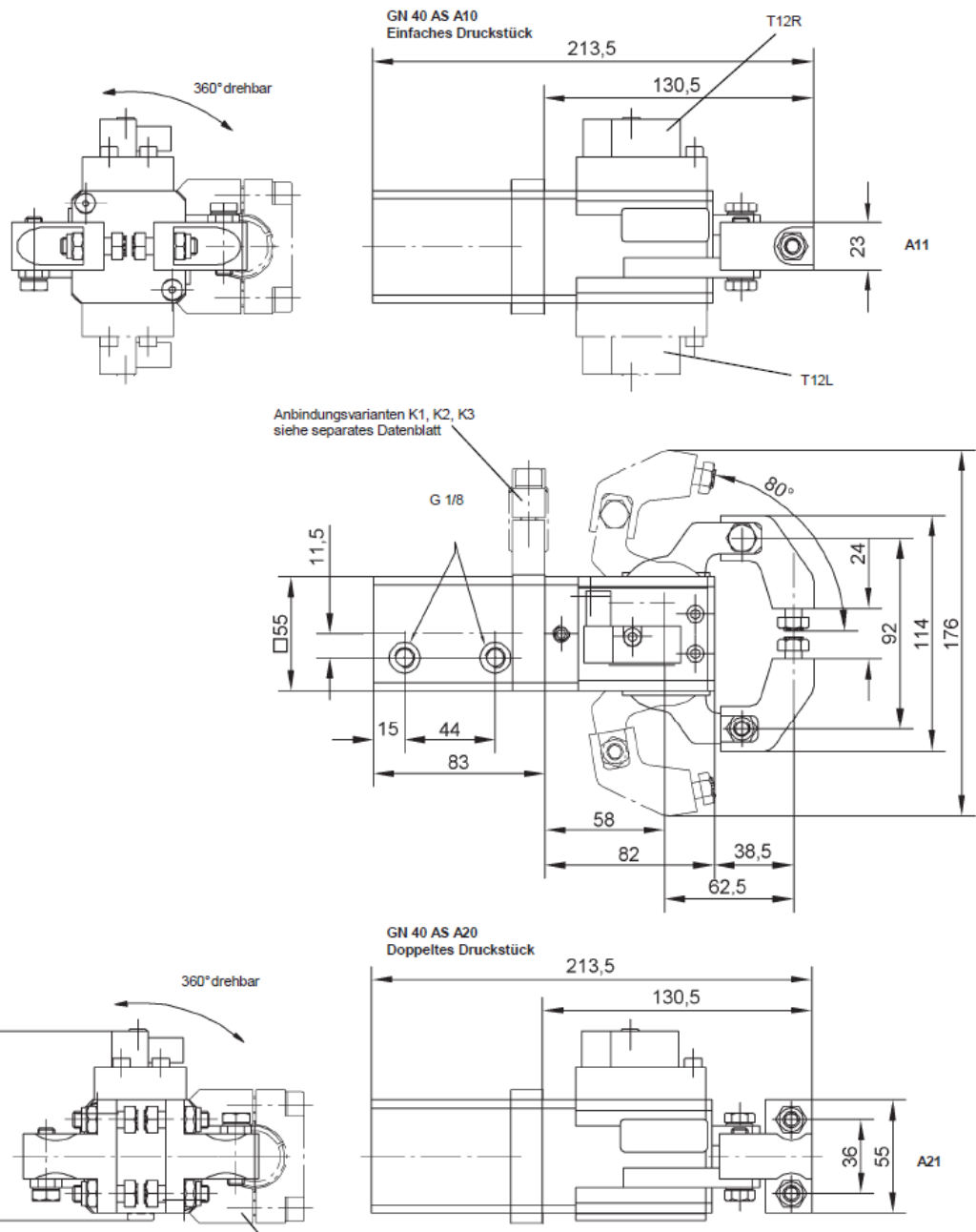
Einzelgewichte in kg:

	GN 40	A11	A21	K1	K2	K3
Pneumatikgreifer	2,0					
Druckstück		0,15	0,24			
Anbindung				0,23	0,35	0,27

z.B. GN 40 A11 K1 = 2,38 kg



Technical data Pneumatic gripper GN 40 AS



Bestellbeispiel:
GN 40 AS A21 K1 T12R 2x80°

- GN 40 AS:
- A21: Typ Doppeltes Druckstück inkl. Spannschrauben mit Hartmetallniffelspitze
 - K1 Anbindung
 - T12R Abfrage rechts (Optional: links) mit LED's
 - 2x80° Öffnungswinkel

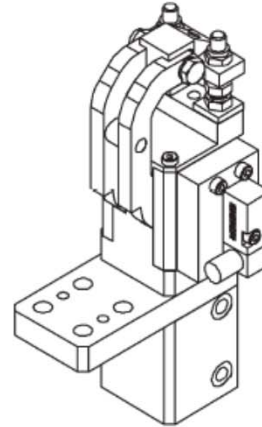
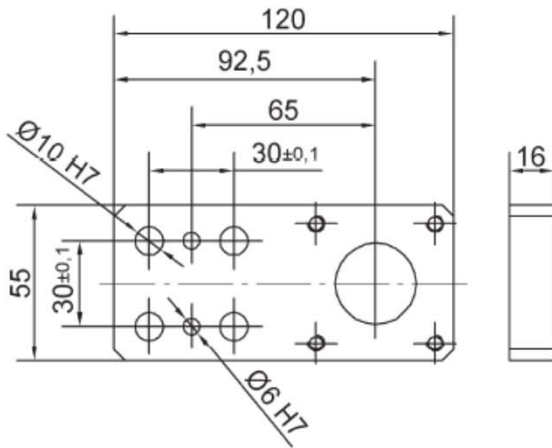
Einzelgewichte in kg:

	GN 40 AS	A11	A21	K1	K2	K3
Pneumatikgreifer	1,8					
Druckstück		0,33	0,51			
Anbindung				0,23	0,35	0,27

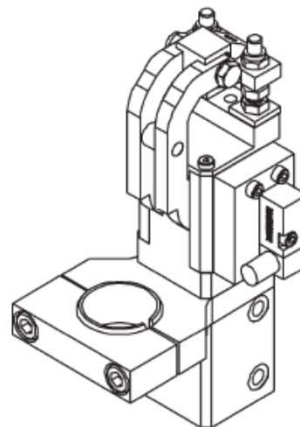
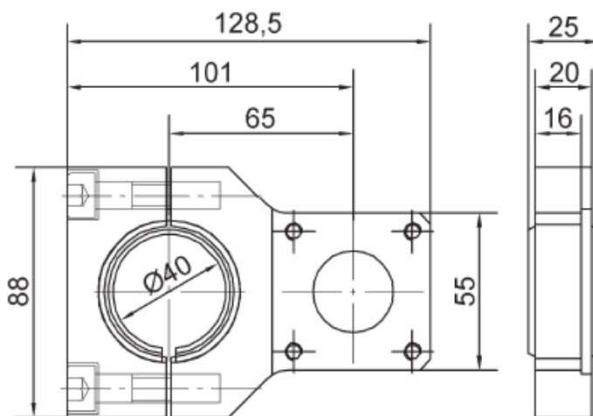
z.B. GN 40 AS A11 K1 = 2,36 kg



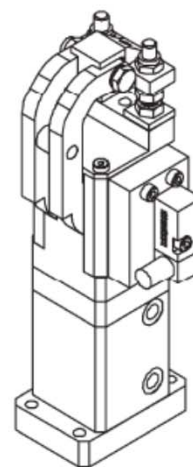
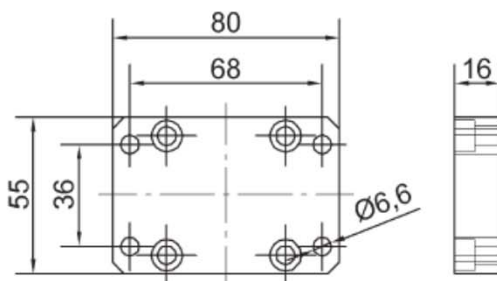
Connection types Pneumatic grippers GN 40, GN 40 AS



Anbindung K1
Schraubflansch



Anbindung K2
Wellenklemmstück



Anbindung K3
Fußflansch



Additional information:



Contact:

Tünkers Maschinenbau GmbH
Am Rosenkoth 4-12
40880 Ratingen

Joachim Bocionek

Telephone +49 (0) 2102-45 17-140
Telefax +49 (0) 2102-45 17-191
E-mail joachim.bocionek@tuenkers.de

Stefan Borkens

Telephone +49 (0) 2102-45 17-310
Telefax +49 (0) 2102-45 17-191
E-mail stefan.borkens@tuenkers.de

Internet www.tuenkers.de

TÜNKERS Flange gripper





TÜNKERS Flange gripper

